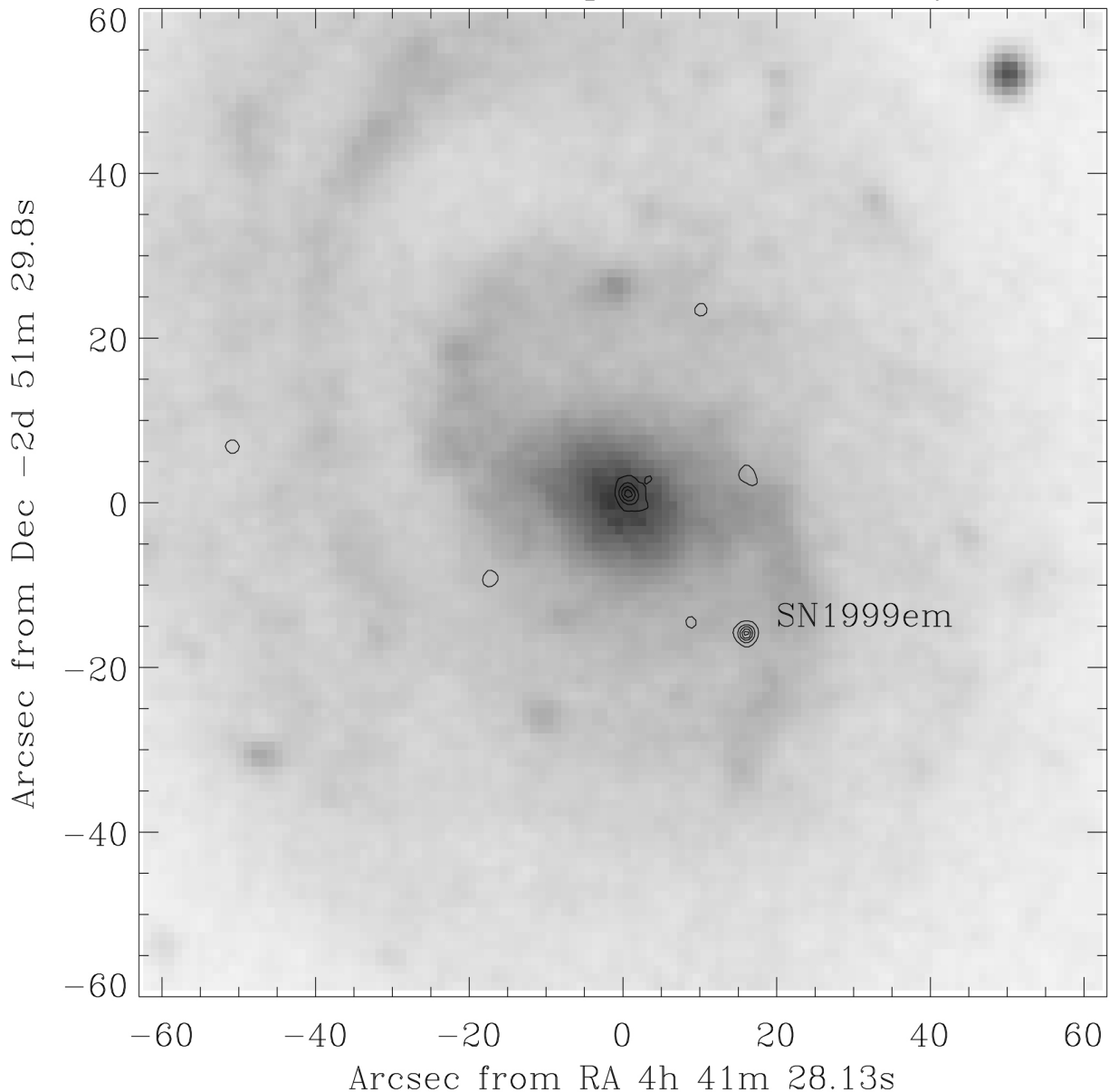


## NGC 1637 in Optical and X-rays



**Chandra X-Ray  
Observatory Center**

Harvard-Smithsonian Center for Astrophysics  
60 Garden Street, Cambridge, MA 02138  
<http://chandra.harvard.edu>

**SN1999em:** A supernova detected in a spiral galaxy 25 million light years from Earth.  
**Credit:** X-ray: NASA/CXC/SAO; Optical: Palomar Obs. Digital Sky Survey

In late October of 1999, a supernova was detected in NGC 1637, a spiral galaxy that is 25 million light years from Earth. Chandra observed the supernova twice soon after the explosion. X rays, shown by contours overlaid on an optical image, were detected from 3 million degree gas produced by the supernova. An X-ray source in the center of the galaxy was also detected.

**Scale:** Image is 2 arcmin on a side.

*Chandra X-ray Observatory ACIS Image*

*CXC operated for NASA by the Smithsonian Astrophysical Observatory*